



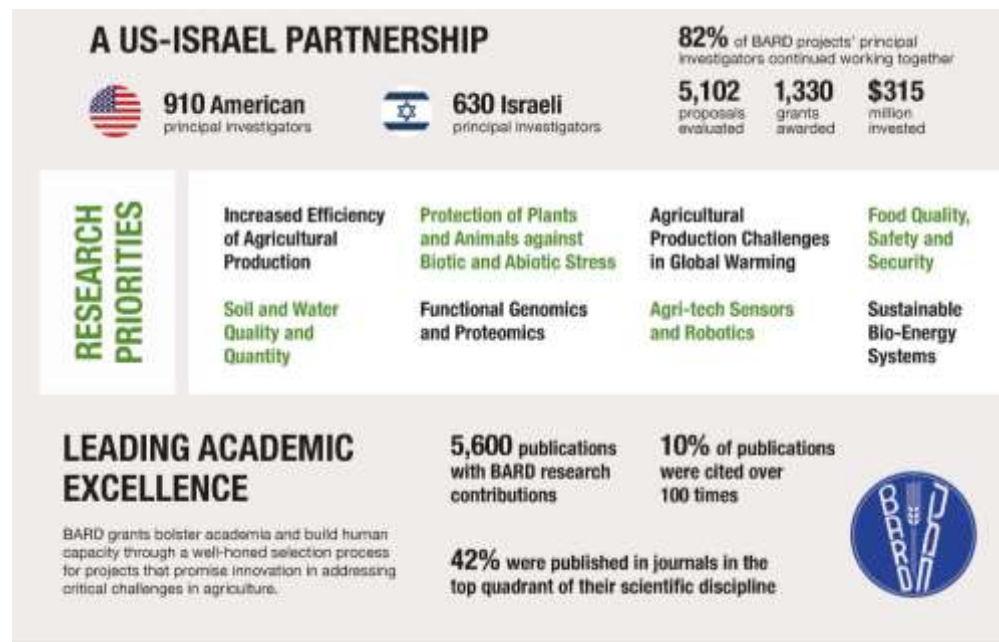
BARD

The United States – Israel BINATIONAL AGRICULTURAL RESEARCH & DEVELOPMENT FUND

2022



40 Year Evaluation





BARD in a Nutshell



Who we are?

Established in 1977, BARD is a competitive funding program that supports collaborative agricultural research in areas of mutual interest to the U.S. and Israel.



What we do?

BARD runs several **funding programs** for all phases of agricultural research and development, including research grants, graduate student fellowships, postdoctoral fellowships, senior researchers and workshops. BARD also supports academia-to-industry collaboration targeted to help investigators commercialize their research outputs (in partnership with the IIA and USDA-NIFA).



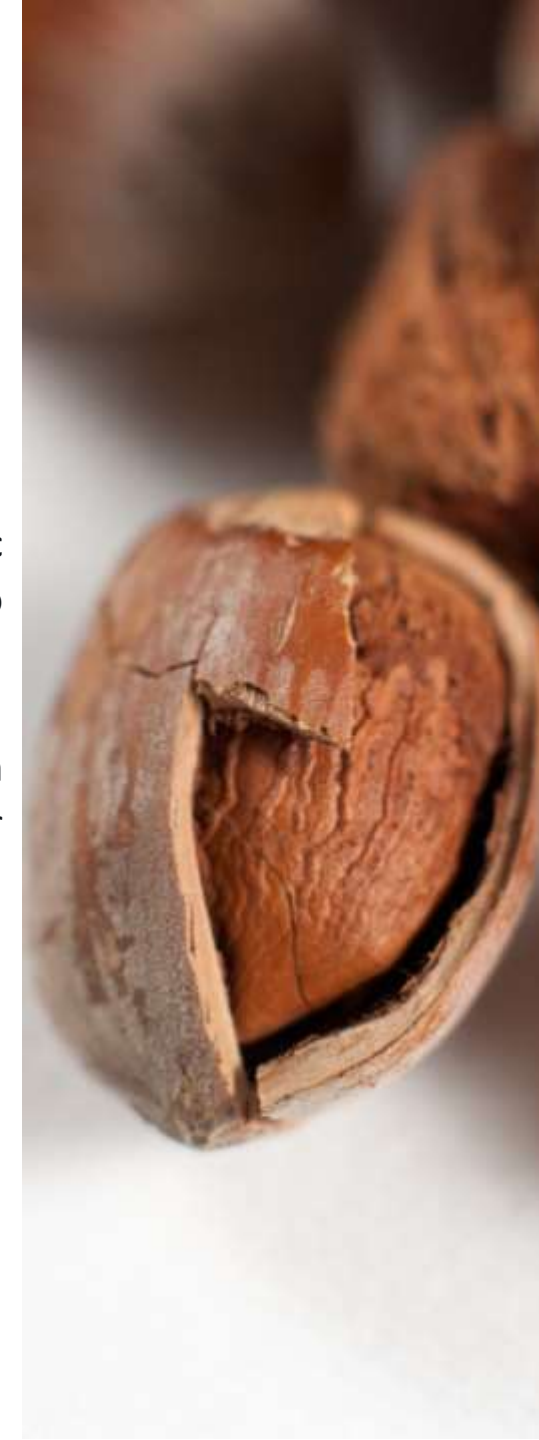
What makes us unique

A long-term effective and synergic collaboration of scientists, working jointly to develop **applicable solutions** for both countries. BARD's income drives from interest on an endowment, **in equal parts by both governments**. Matching funds double the dollar value.



Future

BARD wishes to develop new programs and increase the research portfolio to include new topics: **food sciences and nutrition research** as well as **climate-smart agriculture (CSA)**.







The Need

- Secure Authentication of Investigators
- OAuth provider that is coupled with institutions
- Reduce password fatigue
- Improve security





The Solution

- ORCID 
 - OAuth provider
 - Every researcher has ORCID 
 - Loosely coupled with the institution
 - Public API
- Added Benefits
 - Grant registered in ORCID database
 - Publications tracked in ORCID database
 - Current address information





Applications



To submit or join a proposal you need to be registered first. You only need to register once even if you are participating in multiple proposals.

If you submitted a proposal last year (2022 submission) or you have an existing grant and have used to BARD site to submit scientific or fiscal reports, you need to login with your existing BARD credentials. If you have forgotten your password, you can reset it [here](#)

You can also register using your ORCID ID. You must give public viewing permissions of your email in order to register with your ORCID ID. (See link above the ORCID button).

If you don't want to make your email public on ORCID, you can register with your email and link your ORCID account to that email by clicking on the hyperlink 'Link ORCID' in the main menu.

To add a partner to the proposal, the initiator of the proposal must send an invitation from the cover page form. The partner will receive an email asking them to register with BARD.

They will also receive a temporary counter number and proposal password which will allow them to join your proposal.

The email you use to invite the partner must be the same email as that which he/she will use to register to the site.

We recommend that you review the [BARD Proposal Guidelines](#) before you begin the submission process.

[New Registration](#)

[View My Proposals/Initiate New Proposal](#)





Results

Registered with ORCID	19
Linked to ORCID	28
Total ORCID	47
Total Registered	200





Challenges

- Email not public by default
 - ORCID needs to reconsider its default privacy settings
- Not an everyday tool for many investigators
- Membership Dues for the Fund is Prohibitive



Thank You

Haim Katz

haim@bard-isus.com

